

# NEW MODEL MOPA M8 series



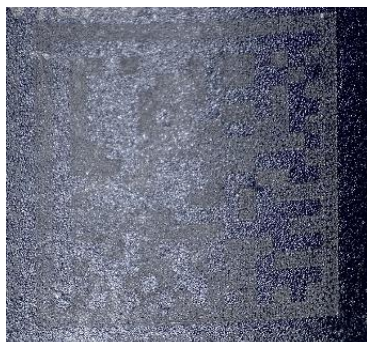
JPT launched the new series of MOPA M8 fiber infrared laser. Compared with M7 series, M8 has stronger pulse energy and higher peak power.

Click the link below to go to the M8 video:

<https://youtu.be/-aCS7rt7cJQ>

## Comparison between M7 and M8

Type	M8 20W	M7 20W
Maximum pulse energy	1.1 mj	0.8 mj
Maximum peak power	50 KW	13 KW
Size	272*105*76	245*200*65
Weight	2.7 KG	3.75 KG



Other lasers



M8

# Specification of M8 20W

Characteristic	Unit	M8 20W
M <sup>2</sup>		<1.4
Average Output Power	W	>20
Maximum Pulse Energy	mJ	1.1
Pulse Repetition Rate Range	kHz	1-4000
Full Power Frequency Range	kHz	23-4000
Pulse Width	ns	2-500
Output Power Instability	%	<5
Cooling Method		Air-cooled
Power Supply Voltage(DC)	V	220V
Power Consumption	W	<120
Central Wavelength	nm	1064
Emission Bandwidth@3dB	nm	<15
Polarization		Random
Anti-Reflection Protection		Yes
Built-in Red Beam		Yes
Output Beam Diameter	mm	7.0±0.5
Output Power Tuning Range	%	0 ~ 100
Ambient Temperature Rang	°C	0 ~ 40
Storage Temperature Range	°C	-10 ~ 60
Dimensions	mm	272*105*76.2
Package Size	mm	460*260*140
Weight	Kg	Net: 2.7 Gross: 3.7

*This table is for reference only, please contact us for more details.*

한성이노텍



잉크젯 | 레이저 | 마킹시스템 | 라벨러 | 피더기 | 비전검사



장비 및 기술문의  
**1670-7792**

홈페이지, [www.hsinnotech.com](http://www.hsinnotech.com) 블로그, [blog.naver.com/mysad123](http://blog.naver.com/mysad123)

TEL 1670-7792 FAX (063)904-1239  
E-mail : [hs@hsinnotech.com](mailto:hs@hsinnotech.com)